

PRSRT STD  
U.S. Postage  
**PAID**  
Los Alamos, NM  
PERMIT # 152

## Los Alamos County Facts and Figures

**Population:** 18,343

**Location:** 93 miles north of Albuquerque (1.5 hrs)  
35 miles northwest of Santa Fe (.5 hrs)  
65 miles southwest of Taos (1.0 hr)

**Elevation:** 7,355 feet

**Climate and Temperature:** Dry and mild climate with an average low of 17° F in January and an average high of 81° F in July. 340 days of sunshine per year.

**Precipitation:** Average annual precipitation is 12 inches. From November through March, snowfall averages 5 to 6 inches per month.

**The Los Alamos County Airport:** is rated for small, private and business aircraft only. Avgas is available and Budget Rent-a-Car is on site. 505-662-8420 for more info. Albuquerque International Sunport Airport is the nearest commercial airport serviced by Delta, United, Southwest, American, America West, and Continental.

**Median value of homes sold in 2006:** \$305,500

**Hospitality:** 5 hotels/motels, many B&Bs, and more than 37 restaurants and cafes.

The Los Alamos Visitors Guide  
Los Alamos Meeting and Visitors Bureau  
P.O. Box 460, VG2007  
Los Alamos, New Mexico 87544  
800-444-0707 505-662-8105  
visit.losalamos.com

Published for the Los Alamos Meeting and Visitor Bureau and the Los Alamos Lodgers' Tax Advisory Board, ©2007

Designed and Produced by Griffin and Associates, Albuquerque, NM

*Contributing Photographers:* Dale Coker, Rourke McDermott, Don Usner, and Craig Martin

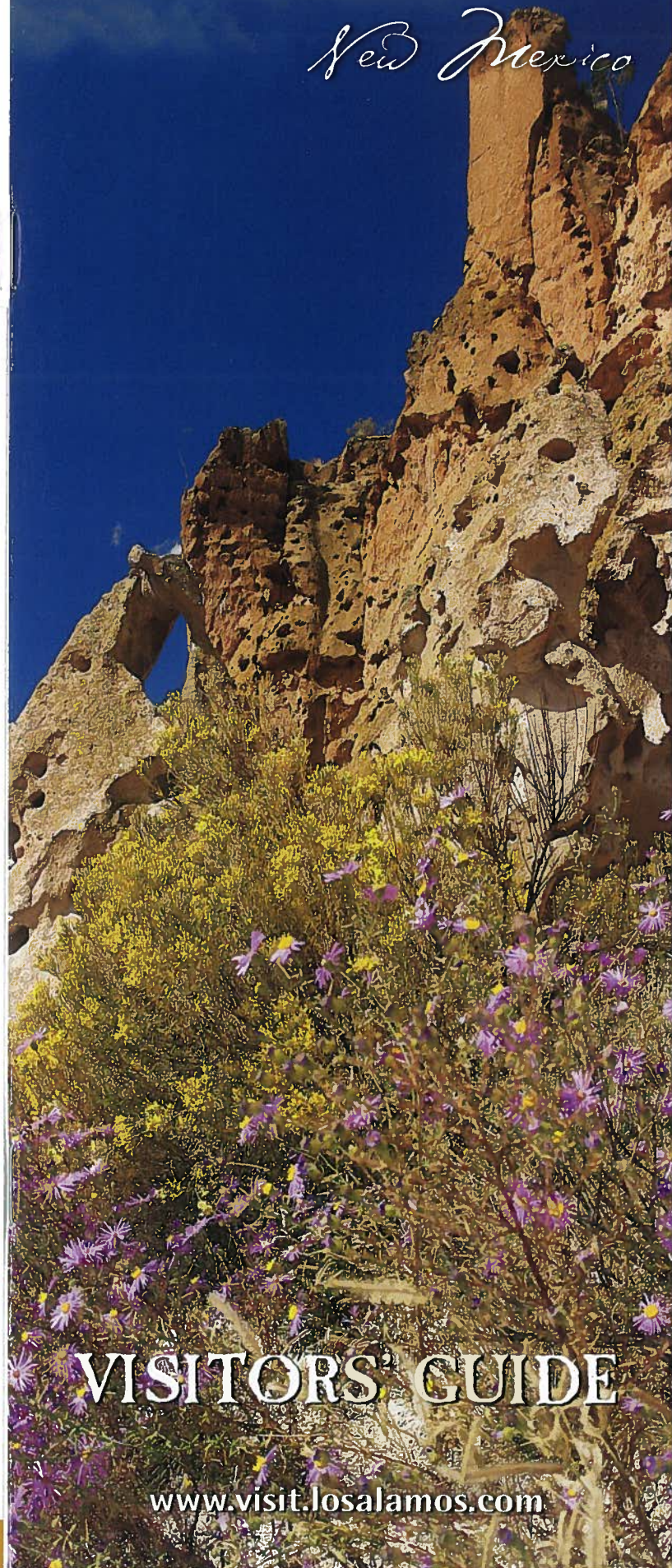
*Maps:* Andrea Kron

*Special Thanks to:* [LTAB] Brad Duni, Ron Selvage, Ken Ashley, Darlene Koontz; [LACDC] Beto Carlson, Kevin Holsapple; [LAC] Tony Mortillaro, Kelly Stewart

Every effort was made to ensure accuracy in the information provided. The publisher assumes no responsibility or liability for errors, changes or omissions.

# LOS ALAMOS

*New Mexico*



## VISITORS' GUIDE

[www.visit.losalamos.com](http://www.visit.losalamos.com)

Where Discoveries are Made.



## Welcome to Los Alamos!

Situated atop steep-walled mesas at the foot of New Mexico's Jemez Mountains, Los Alamos (Spanish for "Cottonwoods") offers some of the most awe-inspiring vistas anywhere. Home to artists, merchants, scientists—and their families—Los Alamos provides stunning natural beauty and a relaxed atmosphere.

At nearby Bandelier National Monument, discover the homes of Ancestral Pueblo people who lived here 900 years ago. Etched into the rocks and carved in the walls of the Jemez Mountains, there is a story ready to be told. Today at nearby pueblos, Native Americans still observe their culture and proud traditions and will share them with you.

Los Alamos offers the outdoor enthusiast ample opportunities year-round—fly fishing, skiing, snowboarding, golfing, swimming, rafting, rock climbing and more. Biking and hiking trails wind their way through sites both scenic and historic, and the ski runs are breathtaking—literally! Los Alamos is one of the few places in the world where you can ski in the morning and golf in the afternoon.

A sense of history envelops Los Alamos, with the story etched on the faces seen in paintings and fading photographs. From the Native Americans who lived here, to the homesteaders who traveled up to the plateau in search of more rainfall for farming, to the scientists who pioneered technological innovations (including the atomic bomb) there are tales here we'd love to share with you.

We invite you to discover Los Alamos and make it your home base when you travel throughout northern New Mexico. If we can help you in any way, let us know. Stop by the Visitor Centers in downtown Los Alamos or White Rock for more information.

*Brad Duni*

Brad Duni, Chair  
Lodgers' Tax Advisory Board  
Los Alamos County, New Mexico

505-662-8105  
800-444-0707  
[visit.losalamos.com](http://visit.losalamos.com)

Indian Paintbrush



Consolidation of rock formation along Highway 4 in Rincon Canyon by Dale Ecker

## Ancient Places

### BANDELIER NATIONAL MONUMENT



Alcove House, the highest Ancestral Pueblo dwelling at Bandelier

At Bandelier National Monument you will find Ancestral Pueblo dwellings scattered across a landscape of broad mesas and steep-walled canyons that provide habitat for a diversity of plant and animal life.

The main trail (1.2 mile loop) in Frijoles

Canyon provides easy access (partially handicapped accessible) to the remains of these ancient homes. Like past inhabitants, you can climb ladders into several of the small carved rooms (cavates). A more challenging climb can be found at Alcove House where Ancestral Pueblo people built homes in a natural recess in the cliff face. Four ladders and a number of stone stairs are required to make the 140-foot ascent.

Although best known for archeological sites, Bandelier also includes 23,000 acres of designated wilderness. Over 70 miles of trails vary in difficulty from easy footpaths good for the whole family to more challenging ones best for experienced hikers.



Cholla Cactus overlooking the Tyuonyi village.



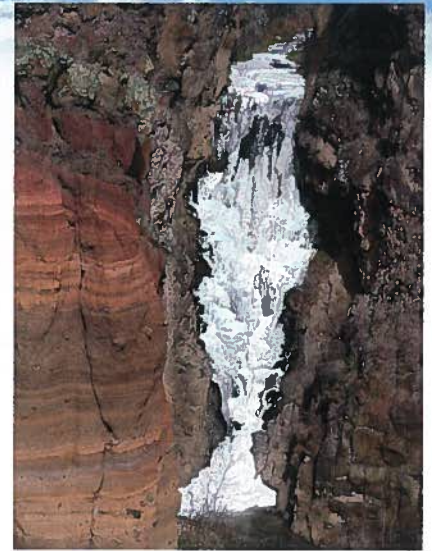
Hiking in Bandelier National Monument.

*As you travel through the area, please remember to respect the sanctity of these ancient sites.*



Permits for overnight stays in Bandelier's backcountry are available at the visitor center.

During summer months, Bandelier National Monument offers guided walks daily, plus evening and cultural demonstration programs on weekends. Self-guided tours are available all year. Special programs may be offered.



Frozen Upper Falls at Bandelier National Monument.

### Bandelier National Monument

[www.nps.gov/band](http://www.nps.gov/band)  
505-672-0343 or 672-3861 ext. 517  
10 miles (approx. 25 min.) south of Los Alamos

While on State Road 4 to Bandelier, make a short detour to the **White Rock Overlook** for a panoramic view of the **Rio Grande** and **Sangre de Cristo Mountains**. Stop at the White Rock Tourist Information Center for brochures and maps.



Petroglyphs near White Rock, Los Alamos County.



# Historic Faces

**ANCIENT HISTORY** • About 1.2 million years ago, a series of giant volcanic eruptions resulted in ash flows that formed the spectacular **Pajarito Plateau**. The **Jemez** (Hay-mess) **Mountains** rising above Los Alamos are remnants of the volcano, and its crater is the 89,000-acre **Valles Caldera National Preserve**. Mountain grasslands punctuated by forested domes can be seen along State Road 4 which traverses the Preserve, just 15 miles west of Los Alamos.

Starting in approximately 1150 AD, Ancestral Pueblo people began to build permanent settlements on the Pajarito Plateau. For more than 400 years, they survived by harvesting crops planted in mesa-top fields and collecting a wide range of useful native plants. Changing conditions on the plateau provided the impetus for the people to move and begin constructing the pueblos along the Rio Grande where many exist today. Evidence of this early occupation of the Pajarito Plateau can be found in the dwellings at **Bandelier National Monument**.

In the decades leading up to the turn of the 20th century, the Pajarito Plateau experienced the cultures and influences of a new generation of settlers—from Spanish landgrant holders to homesteaders, merchants, farmers and ranchers.

**DEFINING YEARS** • In 1917, one of the most successful ranches, the Alamos Ranch, was purchased by Ashley Pond, a Detroit entrepreneur and former “Rough Rider”. Pond converted the working ranch to the **Los Alamos Ranch School**—where ‘privileged eastern boys might become robust, learned men’. The natural depression that occasionally filled with water on the property came to be known as **Ashley Pond**. Twenty-six years later, the remote location and existing infrastructure of buildings and roads around the school would make it the ideal choice when the United States government needed a secure location to base the top-secret Manhattan Project.



Norris Bradbury, J. Robert Oppenheimer, John Manley, Richard Feynman, Enrico Fermi and J.M. Kellogg (left to right) at a postwar Lab colloquium.

Checkpoint at the Main Gate to the Secret City.

In 1943, the school closed and in its place gathered some of the world’s greatest scientific minds tasked with unlocking the secrets hidden in the atom. Led by J. Robert Oppenheimer, a physicist at the University of California, this group of men and women

conducted fundamental research which produced the world’s first atomic bomb.



Los Alamos Historical Museum

**EYEING THE FUTURE** • Many of the hundreds of temporary war-time buildings of the Manhattan Project era are gone now, but remaining in the historic heart of Los Alamos are former ranch school buildings that also served the Manhattan Project. Built in 1928 as the dining hall, **Fuller Lodge** is a massive vertical-log structure to which wings were added when it became a hotel after World War II. It now houses the **Art Center at Fuller Lodge** where regional artists are showcased. Adjacent to the lodge in the former ranch school guest house is the award-winning **Los Alamos Historical Museum**, interpreting the social history of the plateau. Admission is free to all Los Alamos museums, as is the printed guide for an easy **walking tour** that provides a journey through time—from the Stone Age to the Atomic Age.

World War II ended in 1945, due in part to the work done here at Los Alamos. In 1947, the Atomic Energy Commission assumed ownership and began building a modern town to support the Los Alamos Scientific Laboratory. In 1957, the security gates came down and property was sold to private individuals. Since then the town has continued to grow.

The Cerro Grande Fire in May, 2000 burned more than 43,000 acres and had an intense impact on the local community. Fewer than 10 years later, both the local and natural communities are showing great signs of rebirth, with rebuilding of homes and regrowth of the trees, plants and flowers that characterize the beauty of this mountain town.



Thistles recover after the 2000 Cerro Grande fire.



Aerial view of Los Alamos Medical Center, Omega Bridge and Los Alamos National Laboratory

# Science & Technology

Housed at the Lab, the RAVE (Reconfigurable Advanced Visualization Equipment) is a large-scale, immersive space with interactive capacity 20 feet long by 10 feet wide by ten feet high. The walls and floors are stereo computer surfaces where images are displayed. The use of stereo produces an immersive effect, so that projected images seem to share the space with the user. The Los Alamos RAVE was the first in the world, and remains the largest in the world. This simulation depicts a ribosome as it creates protein in a cell. The RAVE is accessible only to LANL personnel.

## LOS ALAMOS NATIONAL LABORATORY (LANL)

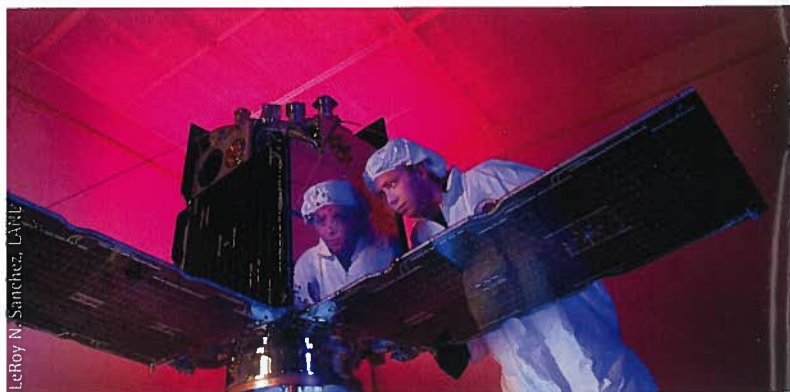


LeRoy W. Sanchez, LANL

The modern culture of Los Alamos cannot be separated from the science and technology introduced with the early 1940s wartime mission to protect the free world. That collegiate, yet military, atmosphere contributed to a competitive spirit among scientists to be the best in their field.

The Los Alamos National Laboratory is one of the premier scientific institutions in the history of the world. With an annual budget exceeding \$2 billion, the Laboratory operates more than 2,100 individual facilities across its 38 square miles of land and employs more than 11,000 people, including contractors. As of 2006, the Lab is operated for the U.S. Department of Energy by Los Alamos National Security, LLC, (LANS), a new public-private partnership that includes the University of California, Bechtel National, Washington Group International and BWX Technologies.

The core mission of the Laboratory is national security. Scientific discovery and technology advances are pursued to ensure the safety and reliability of the U.S. nuclear deterrent, reduce the proliferation of weapons of mass destruction, and counter terrorism. In addition, a broad variety of Lab programs are aimed



LeRoy W. Sanchez, LANL

The Cibola satellite serves as a technology pathfinder for the United States Department of Energy. The payload system studies lightning, ionospheric disturbances, and other sources of radio frequency and atmospheric noise.

at solving national problems in the areas of defense, energy, environment, health and infrastructure.

Whether in the field of material science, biotechnology, physics, chemistry, advanced computing, or modeling of complex systems, it is difficult to conceive of a technology where Lab science has not played a role. Outstanding science is the intellectual underpinning of the Laboratory's past and its future.

## BRADBURY SCIENCE MUSEUM

The technical areas of the Lab are not open for public visits. However, the Laboratory's Community Programs Office operates the Bradbury Science Museum in downtown Los Alamos to provide a window into the history of the institution, its national security mission, and the broad range of exciting science and technology projects that aim to improve our nation's future.



Bradbury Science Museum

Visitors can experience more than 40 high-tech interactive exhibits within the Museum's galleries. A **children's section** features exhibits that incorporate hands-on activities, such as computer programs, learning activities and videos. A 20-minute film on the history of the race to build the first atomic bomb is shown throughout the day. Museum guides are always on hand to answer questions.

Exhibits include information on the Laboratory's research on life sciences, achievements in space, super-computing, energy and the environment.

**Bradbury Science Museum**  
www.lanl.gov/external/museum  
15th and Central  
505-667-4444

*Admission is free as are special events, evening lectures and science demonstrations.*



Los Alamos kids get cutting-edge science opportunities.



**Bring your Brain to the Bradbury**

# Wide Open Spaces

## SPORTS AND RECREATION



The high-altitude setting atop Pajarito Plateau, combined with the recreational riches of Los Alamos and White Rock, offer a myriad of sport and leisure opportunities—for all seasons and all ages! More than 150 miles of trails are woven throughout the towns and the surrounding mountains.

With so many sunny days, even in winter, **hiking and mountain biking** are year-round sports. While the higher mountain elevations may be snow-covered in winter months, lower trails are still great for pedaling. The organizations listed below have the most up-to-date information on recreation events and opportunities.

### Los Alamos County Recreation Division

2760 Canyon Rd., 505-662-8173 or [www.losalamosnm.us/rec](http://www.losalamosnm.us/rec)  
The Rec. Division runs the bulk of recreation activities in town, including ice skating, swimming, races and other events.

### The Family YMCA

1450 Iris, 505-662-3100, [www.laymca.org](http://www.laymca.org)  
For the low cost of a day pass, you and your family can access the indoor climbing wall, fitness classes, weights and cardio machines, as well as a variety of adult and youth programs.

### Los Alamos Fitness Center

771 Central Ave., 505-662-5232, [www.losalamosfitness.com](http://www.losalamosfitness.com)  
Weights, cardio machines, classes and day passes are offered here.

### Pajarito Mountain Ski Area

Come ski the rim of a volcano! Whether you snowboard, ski alpine or telemark, there are 5 chairlifts, 37 trails, 1,240 vertical feet and terrain ranging from gentle, groomed slopes to challenging steeps and moguls. (Cross country and snowshoe trails available adjacent to the ski area in Camp May.) Open Fri. through Sun. and Federal holidays, plus the 2+ weeks of winter break. Call for snow condition updates, mountain bike access in the “off” season and the most direct driving route to the ski hill.



### Los Alamos County Ice Rink

4475 West Rd.  
505-662-4500  
[www.losalamosnm.us/rec](http://www.losalamosnm.us/rec)  
An outdoor ice-skating rink in a canyon setting adds to the winter fun. The ice rink is the only NHL regulation-sized outdoor refrigerated rink in New Mexico. Open Nov. to March.



### Larry R. Walkup Aquatic Center

2760 Canyon Rd.  
505-662-8170  
[www.losalamosnm.us/rec](http://www.losalamosnm.us/rec)  
Swim in North America's highest-altitude indoor Olympic-size pool. The pool is used by international competitors and families alike. Open seven days a week.



### Los Alamos Public Golf Course

4290 Diamond Dr.  
505-662-8139  
[www.losalamosnm.us/golf](http://www.losalamosnm.us/golf)  
Call to reserve tee times at one of New Mexico's highest and most scenic courses. Located in the Jemez Mountains, the course offers a challenging 6,500-yard

par 72, 18-hole layout. Open March to Nov. **FUN FACT** GOLFERS WILL LOVE: in New Mexico's high altitude air, golf balls travel up to 10 percent farther. What a great way to improve your game!

**Trails:** If **hiking, running, biking** or **rock climbing** is your preferred form of recreation, Los Alamos County has a trail—or outcropping—to match. The varied terrain and scenery make every trek an enjoyable experience. When you're at the visitor center be sure to grab a trail map—crafted by one of Los Alamos' dedicated hikers—and explore some of the best Los Alamos has to offer.



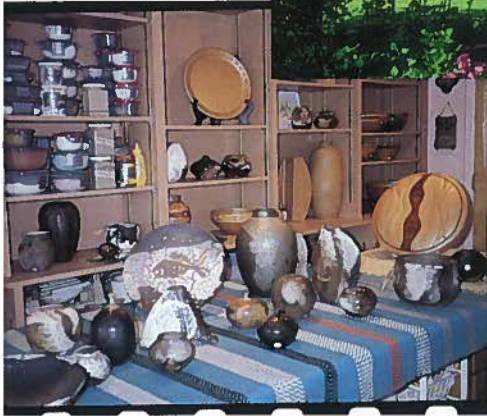
Los Alamos hosts the oldest, continuously running triathlon in the world.

# Creative Spaces

## ARTS AND ENTERTAINMENT

Art abounds in Los Alamos and plays a major role in community life. The town is home to more than sixty organizations and educational programs dedicated to the arts and performing arts. Contact or visit one of the groups listed below for current events and activities.

The Art Center at Fuller Lodge exhibits talented regional artists.



The gift shop features local artisans.

### Art Center at Fuller Lodge

2132 Central Avenue, 505-662-9331, [www.artfulnm.org](http://www.artfulnm.org)  
Showcases and sells art by local and regional artisans.

### The Art Gallery at Mesa Public Library

2400 Central Avenue, 505-662-8250, [www.losalamosnm.us](http://www.losalamosnm.us)  
Designed by famed New Mexico architect Antoine Predock, the gallery features local artists' exhibits and special programs.

### Arts Council

505-663-0477, [www.laartscouncil.org](http://www.laartscouncil.org)  
Sponsors seasonal Arts & Crafts Fairs, a spring Kite Festival, the Missoula Children's Theater, Pumpkin Glow, Los Alamos Film Society, noon-time Brown Bag Performance Series and evening programs.

### Concert Association

505-662-9000, [www.losalamosconcert.org](http://www.losalamosconcert.org)  
Presents five concerts per season in the Duane Smith Auditorium, including Symphony Orchestra performances. All other scheduled events are listed on the website.

### Dance Arts Los Alamos

505-672-9462, [www.danceartslosalamos.com](http://www.danceartslosalamos.com)  
Features top dancers, including guest performers, as well as a winter production of "The Nutcracker" and a spring recital.



The Claremont Trio is one of the acts hosted by the Los Alamos Concert Association.

### Historical Museum and Bookstore

1921 Juniper Street, 505-662-6272, [www.losalamoshistory.org](http://www.losalamoshistory.org)  
Features exhibits and books about the area's geology, anthropology and history.

### Little Theater

1870 Nectar, 505-662-5493, [www.lalt.org](http://www.lalt.org)  
Community theater at its best—from one act plays to musical productions—featuring Los Alamos' local talent, ages 6 to 96!

### Gordons' Concerts

505-661-4891, [www.gordonsconcerts.com](http://www.gordonsconcerts.com)  
Produces weekly outdoor concerts throughout the summer in Los Alamos' most scenic venues. Local restaurants host local and regional acts throughout the year.



Gordons' Concerts provide good times for all ages!



Los Alamos is a favorite concert stop for many nationally-known bands.

# Tours from Los Alamos

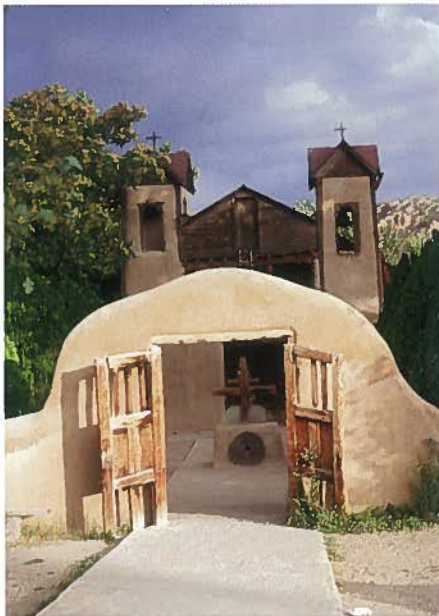
Take off from Los Alamos on a self-guided tour of some of northwest New Mexico's magnificent scenic and cultural wonders. A daytrip will get you safely there and back!

## PUEBLOS AND CHIMAYÓ

mileage round trip: 110.42 miles  
total driving time: 3 hrs. 45 min.

Drive east from Los Alamos on SR 502. Cross the Rio Grande; one mile on your left is the entrance to **San Ildefonso Pueblo** (505 455-3549). Visitors are welcome but are required to register at the visitor center. Next, continue east on SR 502 to Pojoaque (Poe-WAH-kee); exit north onto US 285/84 and drive 0.8 mile and turn right onto SR 503. Drive 4 miles to the entrance of **Nambe Pueblo** (Nam-BAY) on SR 101 (505 455-2036). Go to the Governor's Office for self-guided tours. Or, if you prefer, take a short hike to **Nambe Falls** (open April–Oct.).

Back on SR 503 drive about 10 minutes to SR 98 to Chimayó. Watch for signs to the famous **Santuario de Chimayó** where thousands of people make the annual pilgrimage to this church on Good Friday. Chimayó is also home to several famous weaving families, shops, and galleries. Continue on SR 98 and turn right on SR 76 for a rambling, scenic drive. **Truchas** (TRUE-chas) is a breathtaking location where Robert Redford filmed "The Milagro Beanfield War." Notice in **Las Trampas** a magnificent adobe church made famous by a Georgia O'Keeffe painting. Continue on SR 76 to SR 75 at an elevation of 9,324 feet where **Picuris** (Pick-your-rees) **Pueblo** is located. There's a bison herd and guided or self-guided tours are offered. Visit or call the visitor center (505 587-2519) for permits. Continue west on SR 75 for more vineyards and quaint towns. At SR 68 turn left. Pass through Velarde where autumn offers delicious apples and bright red



Santuario de Chimayó



Roadside Farmers' Markets offer Chili Ristras for Cooking and Decoration



The landscape at Ghost Ranch.

strings of chili ristras (ree-stras). Approaching Española, turn right onto Fairview Lane (SR 584), cross the Rio Grande again, then take a left on US 285/84 to SR 30 back to Los Alamos via **Santa Clara Pueblo**, famous for its polished black and red pottery. Then return to Los Alamos County.

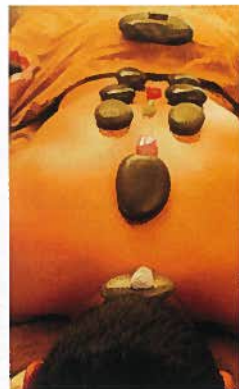
## GEORGIA O'KEEFFE COUNTRY AND OJO CALIENTE

mileage round trip: 175.50 miles  
total driving time: 4 hrs. 45 min.

Drive east from Los Alamos on SR 502, exit on SR 30 to Española, then continue north on US 84. The first stop is Georgia O'Keeffe's home in Abiquiu (AB-bey-q). Tours are given mid-March through November (505 685-4539); advance reservations are required. Continue on US 84 to the **Ghost Ranch Conference Center** and visit an ongoing paleontology quarry and several hiking trails. Afficionados of Georgia O'Keeffe's artwork will note many of her landmarks here. Drive further north on US 84 and visit the **Echo Amphitheater**—a short hike takes you to its stage. Reverse back on US 84 to Abiquiu, then left onto State Road 554 for a rambling 12-mile drive through El Rito. Continue right on SR 554 for another 12 miles to **Ojo Caliente** and its famous hot springs and mineral pools. Then return to Los Alamos County.



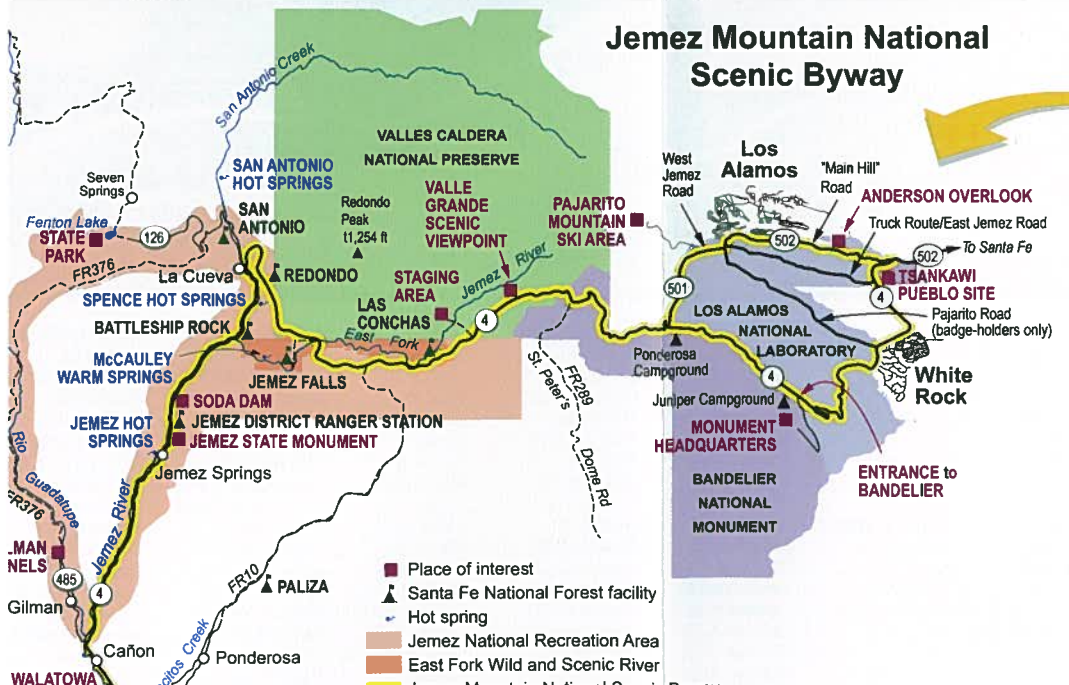
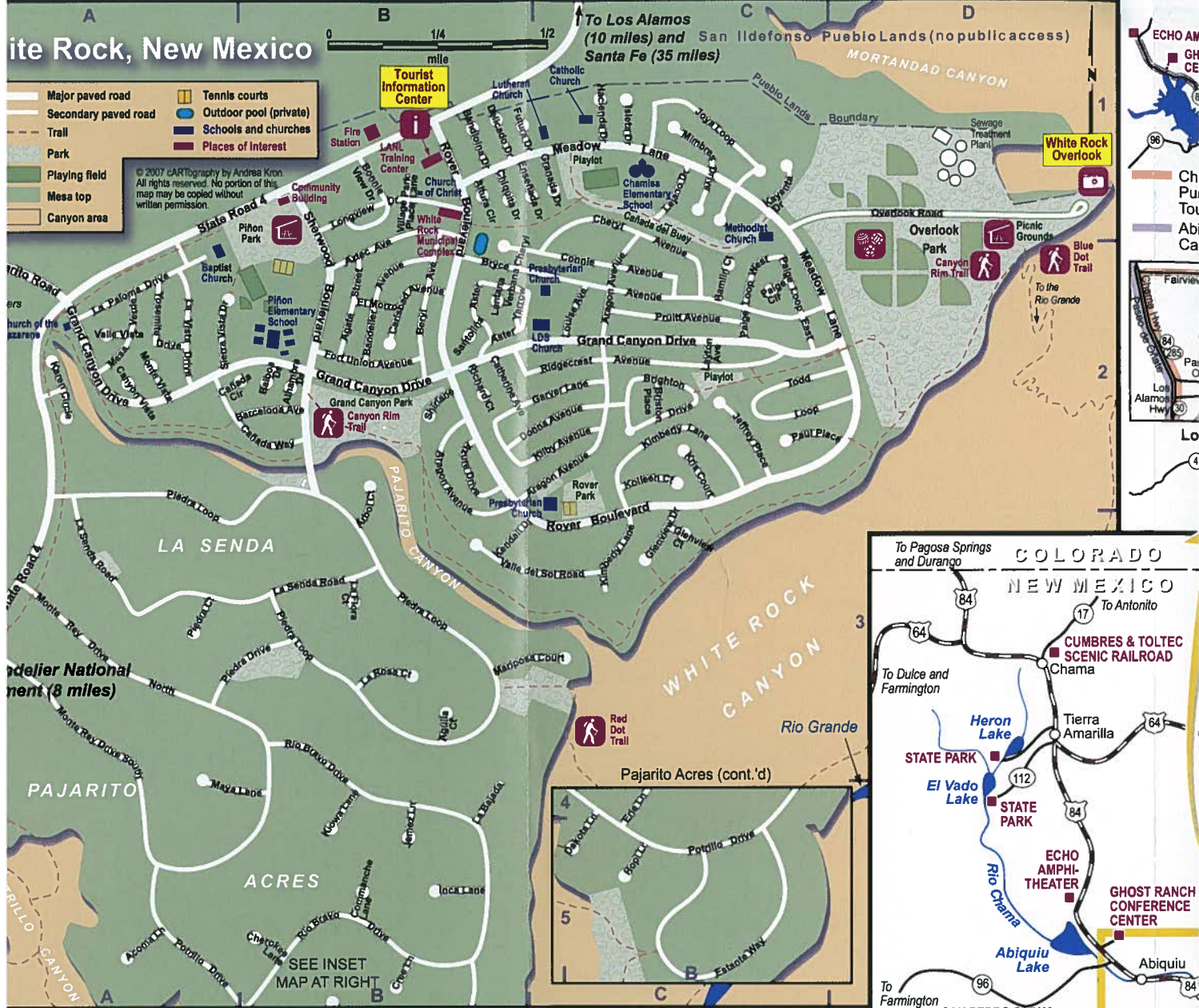
Private Pool at Ojo Caliente.

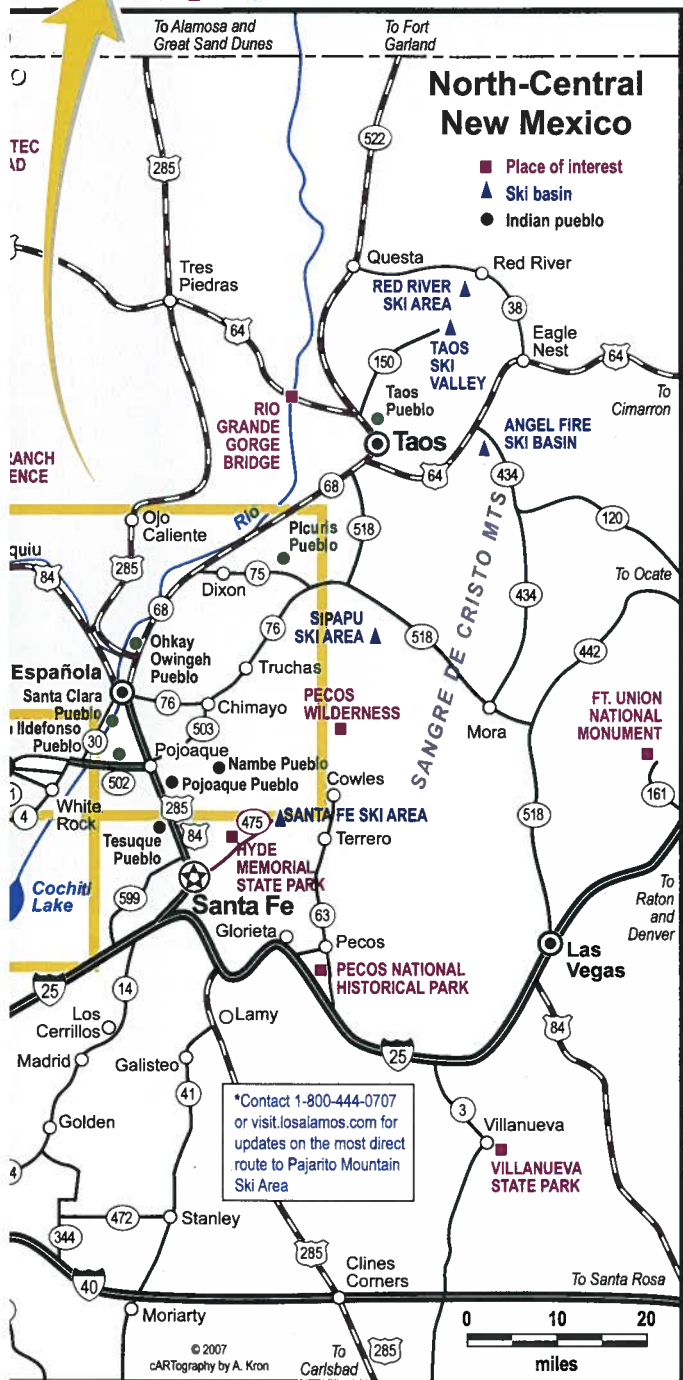
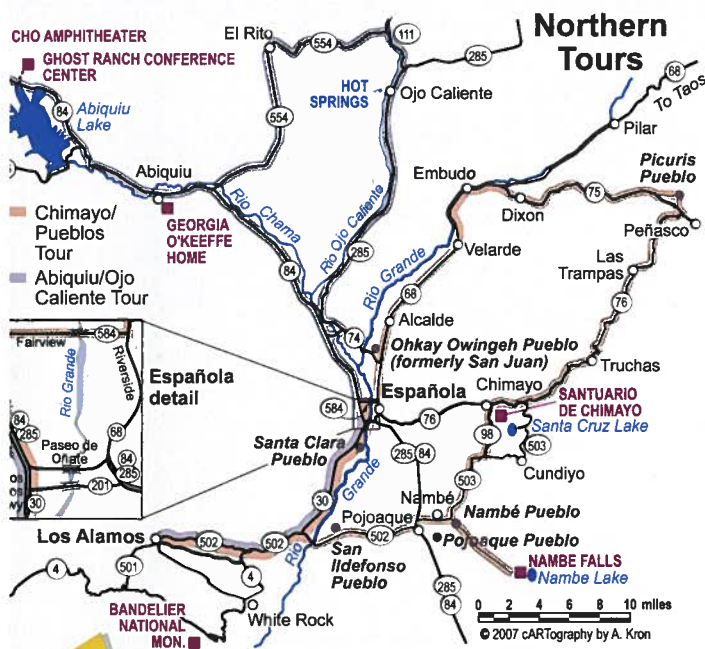


Ojo Caliente's Hot Stone Massage.

see  
North-Central  
New Mexico  
map







# Jemez Mountain National Scenic Byway



mileage round trip: 98.80 miles  
total driving time: 2 hrs. 15 min.

One of 8 official "byways" in the state, the Jemez Mountain National Scenic Byway has an abundance of scenic, natural, cultural and historic assets. This 132-mile loop accommodates most vehicles and offers a convenient and rewarding way to experience the best of Northern New Mexico—in just one day!

Depart west from Los Alamos via State Road 501 and turn right onto State Road 4 (SR 4) toward Jemez (Hey-mess) Springs. The road leads up more than 1,000 feet through dense forest, cresting at an elevation of 9,000. It is at this point that the view will open up to reveal the incredible **Valles Caldera**, a volcanic crater with grazing elk and trails to fishing and hot springs. From here, continue on to **Jemez Falls** campground where a 1/4-mile easy hiking trail leads down to a lovely waterfall. Back on SR 4, see the majestic **Battleship Rock** (on left). A short, but steep, hike takes you to **McCauley Warm Springs**. Further along SR 4, you will see **Soda Dam** and then the **Jemez State Monument**, site of the historic pueblo and mission. If time permits, drive 5-1/2 miles to the **Gilman Tunnels** on SR 485 (a remnant of the old D&RG "Chili Line" railroad that ran in the early 1940's). An extra three miles will take you to **Ponderosa Vineyard** on SR 290 or the red rocks of **Jemez Pueblo** and **Walatowa Visitor Center** (505 834-7235) on SR 4. Return to Los Alamos to refresh, relax and regroup at one of our fine lodging establishments and eateries.



Christmastime at Jemez State Park



Jemez State Monument in spring

see Jemez Mtn. Nat. Scenic Byway map

# LOS ALAMOS

## You only have a day?!!

...follow the northeast trail of the Jemez Mountain National Scenic Byway and visit Bandelier National Monument!

From Los Alamos townsite, take NM 502 down the "Main Hill" Road, stopping at the **Anderson Overlook** to take a photo of Tuck's Table and the other flat-top mesas. Exit to SR 4 to White Rock where it is an easy detour (left) to access the **White Rock Tourist Information Center** and the **White Rock Overlook** (just follow the blue signs) where you'll find a panoramic view of the **Rio Grande** and **Sangre de Cristo Mountains**. Back on SR 4, turn left, heading west and follow the signs to Bandelier.

Allow at least two hours to explore Bandelier, taking a self-guided, one-mile tour on paved trails. When you leave the park, go west on SR 4, then north on Route 501 passing through Los Alamos National Lab's security checkpoints. Cross Omega Bridge, then turn right at Trinity Drive (the second traffic light) to Los Alamos.

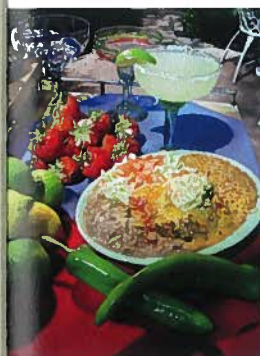


Turn left at 15th street and continue to the light at Central Avenue. Park off-street or in one of the parking lots. You will be at the town center and just blocks away from Los Alamos' historic and cultural treasures, including the **Bradbury Science Museum**, **The Los Alamos Visitor Center**, **the Historical Museum**, **The Art Center at Fuller Lodge** and **Ashley Pond**. Ready for a break? Enjoy one of our many fine restaurants and make Los Alamos your hub as you explore northern New Mexico. We have excellent lodging\*, including:

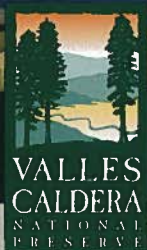
- Adobe Pines B&B
- Ashley Hotel and Suites
- Back Porch B&B
- Best Western Hilltop House
- Canyon Inn B&B
- Hampton Inn & Suites
- Holiday Inn Express
- Los Alamos Lodge
- North Road Inn
- Pueblo Canyon Inn

If time permits, explore the **Tsankawi** section of Bandelier National Monument. From Los Alamos take NM 502 to SR 4 south and look for a gravel parking lot on the left side of the road just before the stop-light. Your Bandelier receipt covers entrance to this site and its 1.5 mile loop trail.

- Art Center at Fuller Lodge**  
www.artful.org  
505-662-9331
- Bandelier National Monument**  
www.nps.gov/band  
505-672-0343 or 672-3861 ext. 517
- Bradbury Science Museum**  
www.lanl.gov/external/museum  
505-667-4444
- Los Alamos Historical Museum**  
www.losalamoshistory.org  
505-662-6272
- Los Alamos Visitor Center**  
visit.losalamos.com  
505-662-8105
- White Rock Tourist Info. Center**  
505-672-3183 or 800-444-0707



fourk/istockphoto



## VALLES CALDERA NATIONAL PRESERVE

The 89,000-acre Valles Caldera National Preserve is one of the newest treasures among America's public lands. The Preserve is dedicated to exploring new ways to manage public land and the environment. The number of visitors is limited and reservations are required for most activities. This allows everyone to feel as though they have the place to themselves. Reservations can be made online or by phone.

**SPRING** • For the first time, the Preserve will offer opportunities to hunt wild turkey. Check the web site for specifics.

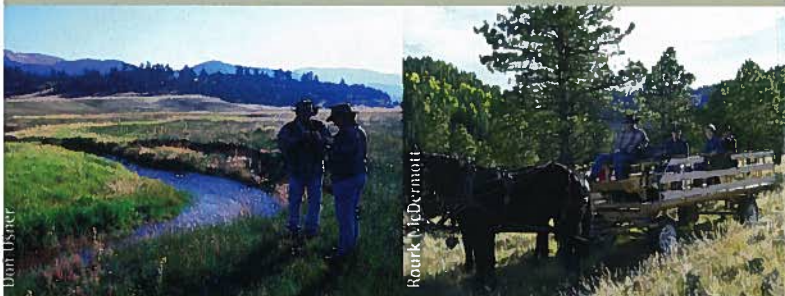
**SUMMER** • Hike our secluded trails. You'll find breathtaking views of the Preserve's 12-16 mile-wide volcanic caldera. Wildlife, such as elk (the state's second largest herd), prairie dogs, coyotes, and black bear roam the land freely.

Anglers covet a treasured day along one of our two streams, the San Antonio Creek or the East Fork of the Jemez River. The Preserve's populations of German brown and rainbow trout are bred in the wild and offer challenging fishing.

Van tours and special events like mountain biking, running, photography, stargazing or bird watching tours are available. Check the web site for specifics.

**AUTUMN** • The Valles Caldera National Preserve offers high-quality elk hunting: hunters experience an excellent success rate. During the autumn this activity uses much of the Preserve, so for safety's sake, other recreational activities are selective.

**WINTER** • Under a blanket of snow, the Preserve is transformed into a vast quiet space. Come visit for day use and overnight cross country skiing and snowshoeing, as well as horse drawn sleigh rides. (All events are offered depending on the abundance of snow cover.)



Most activities require reservations.  
Spaces are limited to ensure a singular nature experience.  
www.vallescaldera.gov  
1-866-382-5537 (toll free).

## ACCOMMODATIONS

- Adobe Pines Bed & Breakfast** 505-661-8828  
2101 Loma Linda Dr. [www.losalamoslodging.com](http://www.losalamoslodging.com)
- Back Porch Bed & Breakfast** 1-505-672-9816  
13 Karen Circle [webbbkprchbb@earthlink.net](mailto:webbbkprchbb@earthlink.net)
- Best Western Hilltop House Hotel** 505-662-2441, 1-800-462-0936  
400 Trinity Dr. at Central [www.bwhilltop.com](http://www.bwhilltop.com)
- Canyon Inn** 505-662-9595  
80 Canyon Rd. 1-800-662-2565  
[www.canyoninnbnb.com](http://www.canyoninnbnb.com)
- Hampton Inn & Suites** 505-672-3838  
124 State Rd. 4 1-888-813-0912  
[www.hamptoninnlosalamos.com](http://www.hamptoninnlosalamos.com)
- North Road Inn** 505-662-3678, 1-866-696-6922  
2127 North Rd. at Urban St. [www.northroadinn.com](http://www.northroadinn.com)

For a complete list of accommodations and services check:  
[www.visit.losalamos.com](http://www.visit.losalamos.com) or call 1-800-444-0707.

## ATTRACTIONS

- Bandelier National Monument** 505-672-3861 ext. 517  
15 Entrance Rd. [www.nps.gov/band](http://www.nps.gov/band)
- Gallery Shop & Exhibits –  
Art Center at Fuller Lodge** 505-662-9331  
2132 Central Ave. [www.artfulnm.org](http://www.artfulnm.org)
- Los Alamos Chamber of  
Commerce** 505-662-8105  
109 Central Park Sq. [www.visit.losalamos.com](http://www.visit.losalamos.com)
- Los Alamos County Recreation  
Division** 505-662-8173  
2760 Canyon Rd. [www.losalamosnm.us/rec](http://www.losalamosnm.us/rec)
- Mesa Public Library & Art Gallery** 505-662-8240  
2400 Central Ave. [www.losalamosnm.us](http://www.losalamosnm.us)
- Pajarito Mountain Ski Area** 505-662-5725  
P.O. Box 1436 [www.skipajarito.com](http://www.skipajarito.com)
- Sandoval County Visitor Center** 1-800-252-0191  
243 Camino del Pueblo, Bernalillo [www.sandovalcounty.org](http://www.sandovalcounty.org)
- Valles Caldera Trust** 505-661-3333 (office)  
18161 Hwy. 4 1-866-382-5537 (reservations)  
Jemez Springs, NM 87025 [www.vallescaldera.gov](http://www.vallescaldera.gov)
- White Rock Tourist Info. Center** 505-672-3183, 1-800-444-0707  
35 Rover Blvd., Ste. D, White Rock [www.visit.losalamos.com](http://www.visit.losalamos.com)

## BOOKSTORES

- Friends of Mesa Public Library  
Bookstore** 505-662-2188  
2400 Central Ave.
- Los Alamos Historical  
Museum Shop** 505-662-2660, 505-662-4493  
1921 Juniper [www.losalamoshistory.org](http://www.losalamoshistory.org)

For a comprehensive list of Los Alamos County businesses, contact  
the Los Alamos Chamber of Commerce at (505) 662-8105 or  
[www.losalamoschamber.com](http://www.losalamoschamber.com).

- Otowi Station Bookstore  
& Science Museum Shop** 505-662-9589  
1350 Central Ave. [books@otowistation.com](mailto:books@otowistation.com)

## CHURCHES

- Hope Church** 505-662-HOPE (4673)  
P.O. Box 1137 [hope\\_upc@yahoo.com](mailto:hope_upc@yahoo.com)  
call for location Pastor Allen Weiser

## FINANCIAL

- 1st Metropolitan Mortgage** 505-661-1300  
1350 Central Ave., Ste. 101 505-661-4939 (fax)  
[www.1stmetropolitanlosalamos.com](http://www.1stmetropolitanlosalamos.com)
- Los Alamos National Bank** 505-662-5171  
1200 Trinity Dr. [www.lanb.com](http://www.lanb.com)
- State Farm Insurance** 505-661-0600  
Lou Santoro 505-661-0610 (fax)  
110 Central Park Sq. [lou.santoronz8q@statefarm.com](mailto:lou.santoronz8q@statefarm.com)
- Wells Fargo Los Alamos** 505-662-1655  
535 Central Ave. 505-662-1657 (fax)  
[www.WellsFargo.com](http://www.WellsFargo.com)
- Zia Credit Union** 505-662-4671  
1001 Central Ave. [www.ziacu.org](http://www.ziacu.org)

## MEDIA | INTERNET SERVICES

- KRSN AM 1490** 505-663-1490  
"Kommunity Radio Station Now" [www.KRSNAM1490.com](http://www.KRSNAM1490.com)  
145 Central Park Sq.

## MEDICAL

- Los Alamos Medical Center** 505-662-4201  
3917 West Rd. [www.losalamosmedicalcenter.com](http://www.losalamosmedicalcenter.com)

## MUSEUMS

- Bradbury Science Museum** 505-667-4444  
15th St. and Central Ave. 505-665-6932 (fax)  
[www.lanl.gov/museum](http://www.lanl.gov/museum)
- Los Alamos Historical Museum** 505-662-6272, 505-662-4493  
1921 Juniper [www.losalamoshistory.org](http://www.losalamoshistory.org)

## REAL ESTATE

- Ina Acomb at Los Alamos  
Properties** 505-662-0930  
1475 Central Ave. #150 Ina's cell 505-690-0733  
[inaacomb@hotmail.com](mailto:inaacomb@hotmail.com)
- Jeanette Metzger-Thorp,  
Associate Broker** 505-690-1199 (cell)  
147 Central Park Sq. [jeanette@laforsale.com](mailto:jeanette@laforsale.com)  
[www.laforsale.com](http://www.laforsale.com)
- Los Alamos Inc., Realtors** 505-661-1200  
2102 Trinity Dr., Ste. D [www.LosAlamosHouses.com](http://www.LosAlamosHouses.com)
- Los Alamos Properties, LLC** 505-662-0930  
1475 Central Ave., Ste. 150 [losalamosproperties@msn.com](mailto:losalamosproperties@msn.com)

For a comprehensive list of Los Alamos County businesses, contact  
the Los Alamos Chamber of Commerce at (505) 662-8105 or  
[www.losalamoschamber.com](http://www.losalamoschamber.com).

# Service Listings

- Mary Deal Realty** 505-662-5551  
2610 Trinity #4, Box 567 [www.marydealrealty.com](http://www.marydealrealty.com)
- Prudential Los Alamos Real Estate** 505-662-7111  
147 Central Park Sq. 800-416-6767  
[www.prudentiallosalamos.com](http://www.prudentiallosalamos.com)
- RE/MAX of Los Alamos** 505-662-6789  
108 Central Park Sq. 1-800-987-7764  
[remaxlosalamos.realtor.com](http://remaxlosalamos.realtor.com)
- Suzie Havemann - RE/MAX** 505-662-1560  
108 Central Park Sq. 505-412-1620 (cell)  
[www.suziehavemann.com](http://www.suziehavemann.com)
- Stewart Central Title** 505-661-7333  
1789 Central Ave. Ste. 6 [www.stewartcentraltitle.com](http://www.stewartcentraltitle.com)
- Trinity Realty** 505-662-0620  
1350 Central Ave., Ste. 201 505-661-6333 (fax)  
[www.trinityrealty.net](http://www.trinityrealty.net)

## RESTAURANTS

- Bob's Bodacious BBQ, Inc.** 505-662-4227  
3801 Arkansas Ave., Ste. G 505-661-4912 (fax)  
[bobsbodaciousbbq1@comcast.net](mailto:bobsbodaciousbbq1@comcast.net)
- DeColores Restaurant** 505-662-6285  
2470 East Rd. 505-662-7440 (fax)
- Hot Rocks Java Café** 505-663-5282  
4200 West Jemez at Research Park 505-663-5283 (fax)  
[www.hotrocksjava.com](http://www.hotrocksjava.com)
- Rancho De Chimayó Restaurant** 505-351-4444, 505-984-2100  
County Rd. 98 #300, Chimayó [www.ranchodechimayo.com](http://www.ranchodechimayo.com)
- The Hill Diner** 505-662-9745  
1315 Trinity Dr. [www.thehilldiner.com](http://www.thehilldiner.com)
- Trinity Beverage Company** 505-662-3800  
2201 Trinity Dr., Ste. G 505-662-3900 (fax)  
[www.trinitybevco.com](http://www.trinitybevco.com)

## SHOPPING/SERVICES

- CB Fox** 505-662-2864  
1735 Central Ave. [www.cbfox.com](http://www.cbfox.com)
- Golden Light Massage Therapy** 505-661-4857  
190 Central Park Sq., Ste. 105 Gwen Lewis
- Pet Pangaea** 505-661-1010  
158 Central Park Sq. [www.petpangaea.com](http://www.petpangaea.com)
- UPEX - One Stop Copy, Ship  
& Gift Center** 505-662-3119  
107 Central Park Sq. [www.upexplaus.com](http://www.upexplaus.com)
- Village Arts by Marilyn** 505-661-2526  
170 Central Park Sq. [villagearts@msn.com](mailto:villagearts@msn.com)

## TOURS

- Tour the Atomic City with  
Buffalo Tours** 505-662-3965  
P. O. Box 726 [buffalotours@att.net](mailto:buffalotours@att.net)

For a comprehensive list of Los Alamos County businesses, contact the Los Alamos Chamber of Commerce at (505) 662-8105 or [www.losalamoschamber.com](http://www.losalamoschamber.com).